



# Guide to Using the 2016 Election Administration and Voting Survey Data Visualization Tool

---



## Table of Contents

Introduction .....	2
State Level Map .....	3
Jurisdiction Totals Map .....	5
State Data Brief.....	7
Jurisdiction Data Brief .....	8
Jurisdiction Comparison .....	9



## Introduction

The [2016 Election Administration and Voting Survey \(EAVS\) Data Visualization Tool](#) was created to help you visualize and navigate the information that the Election Assistance Commission collected about the 2016 election cycle. The tool encompasses 5 primary visualizations:

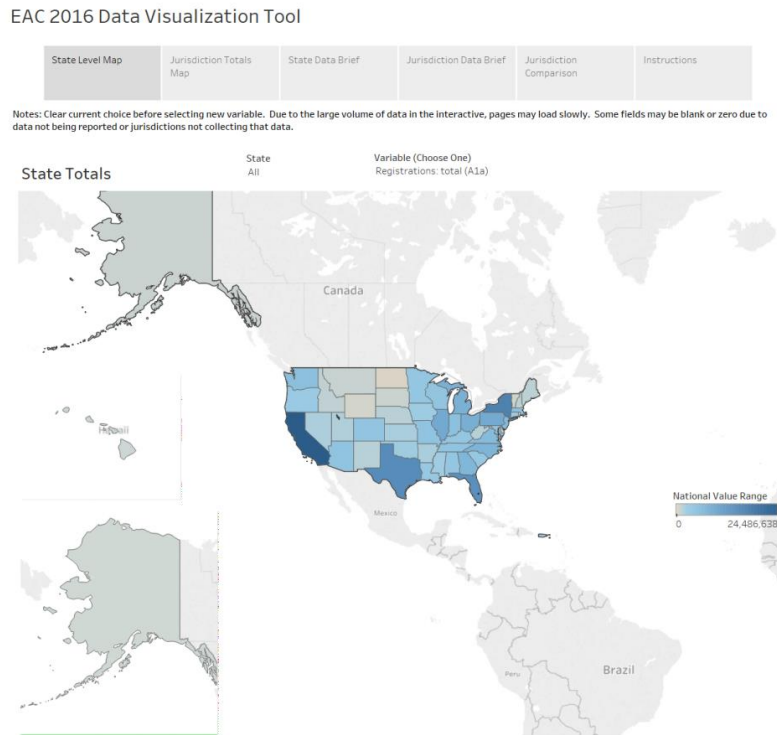
- **State Level Map** – This map allows you to view the data variables (one at a time) of any given state or states.
- **Jurisdiction Totals Map** – This map allows you to view the data variables (one at a time) of all jurisdictions in any given state or states.
- **State Data Brief** – This brief provides state-level 2016 EAVS data summaries.
- **Jurisdiction Data Brief** – This brief provides jurisdiction-level 2016 EAVS data summaries for any given state.
- **Jurisdiction Comparison** – This tool compares EAVS data from one jurisdiction to one or more other jurisdictions.

Due to the large volume of data in the interactive, pages may load slowly. Some fields may be blank or zero due to data not being reported or jurisdictions not collecting that data. The data reflect what was reported by the state to the EAC.

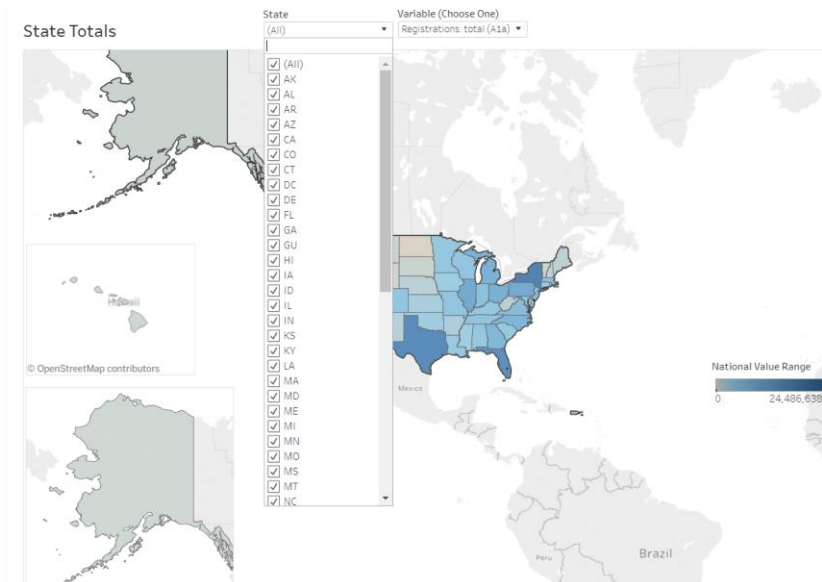


## State Level Map

This map allows you to look at EAVS data for all responding states. Washington D.C. and territories. When you access the state level map, it appears as follows:

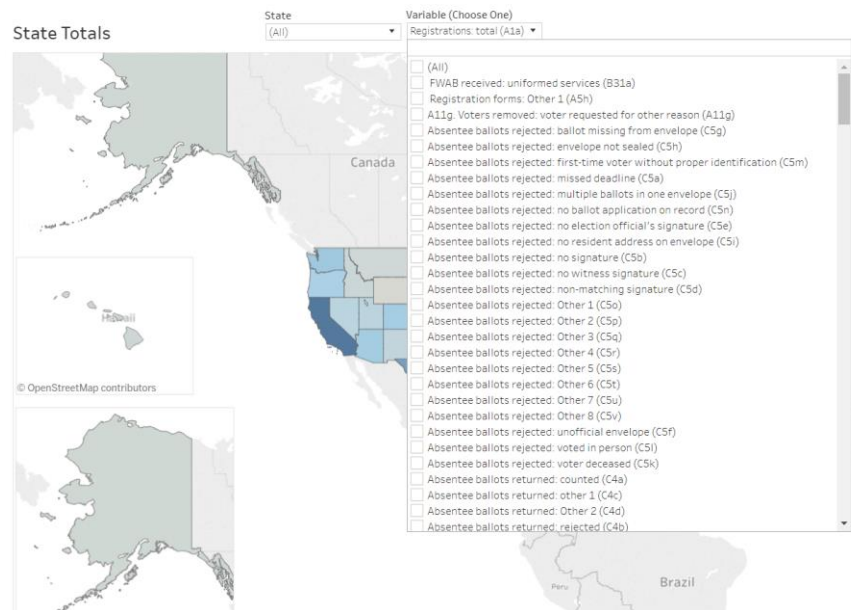


You may select one, multiple or all states to view at a time. To select a state, scroll down the list and check a state or click on the state box and type in the abbreviation of the state you are looking for.





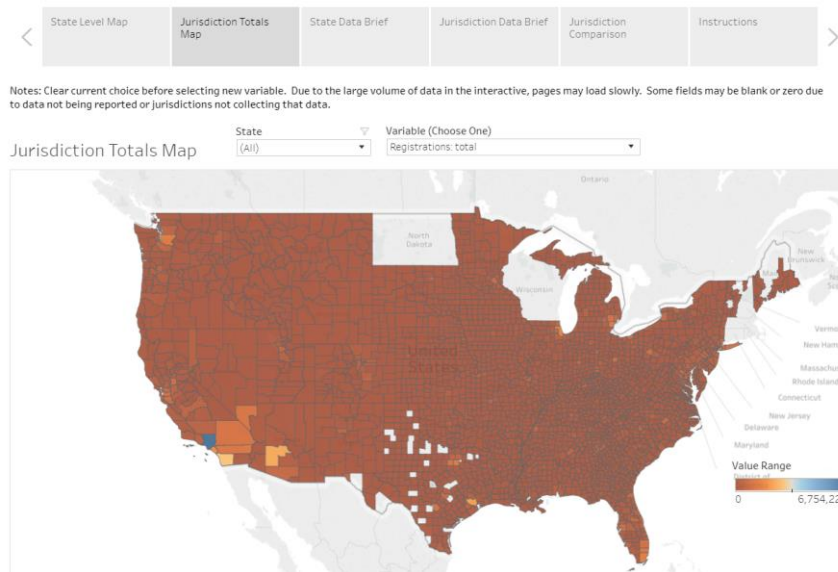
You may only select one data variable to view at a time. To select a variable, scroll down the list and check a variable or click on the variable box and type in the data variable you are looking for. The name of the variable you have selected will be displayed in the variable box. There is a default variable selected when you access the map so make sure to deselect it first. Clear your current choice before selecting a new variable.



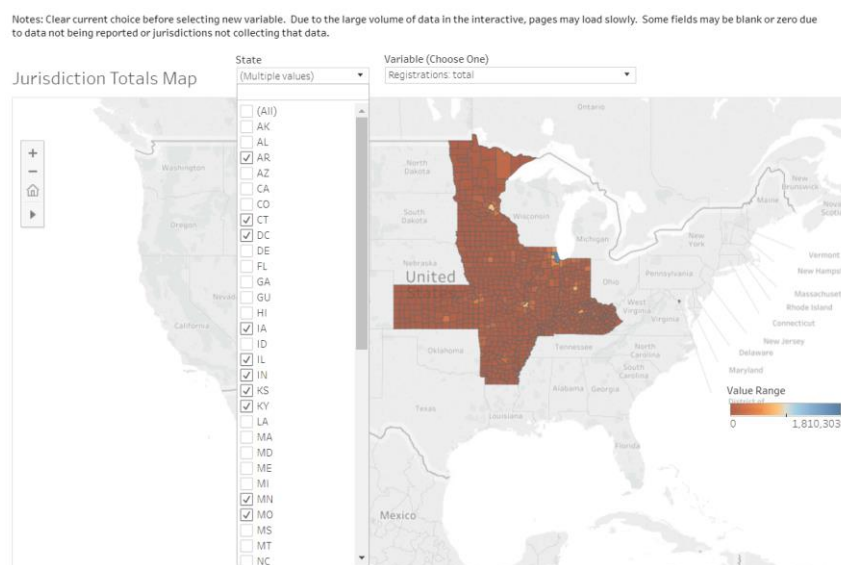
## Jurisdiction Totals Map

This map allows you look at EAVS data for responding jurisdictions. When you access the jurisdiction level map, it appears as follows:

### EAC 2016 Data Visualization Tool

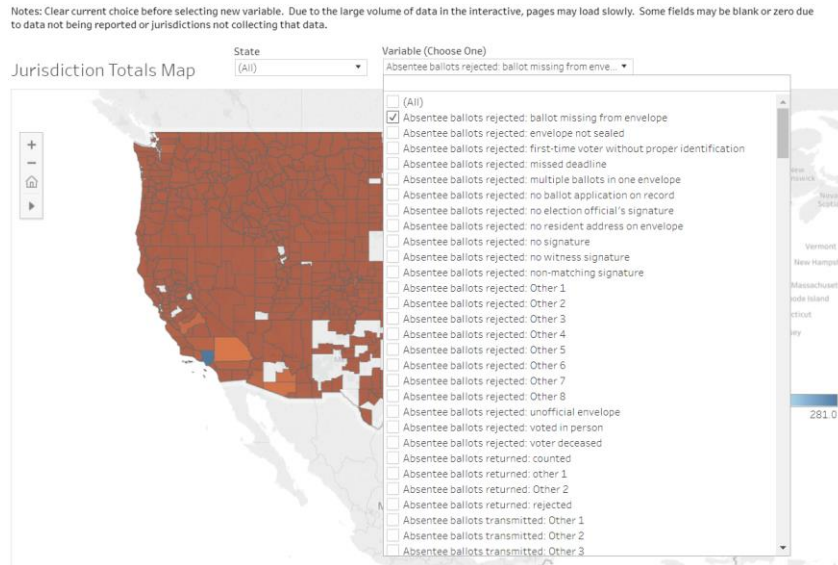


You may select one, multiple or all states to view at a time. Select a state or multiple states to view and select only one data variable and then data will be displayed for all jurisdictions in that state or states.





To select a different variable, deselect the current variable you have selected and then select the new variable you wish to view. In selecting a variable, you may scroll down the list and check a variable or click on the variable box and type in the data point you are looking for. There is a default variable selected when you access the map so make sure to deselect it first.





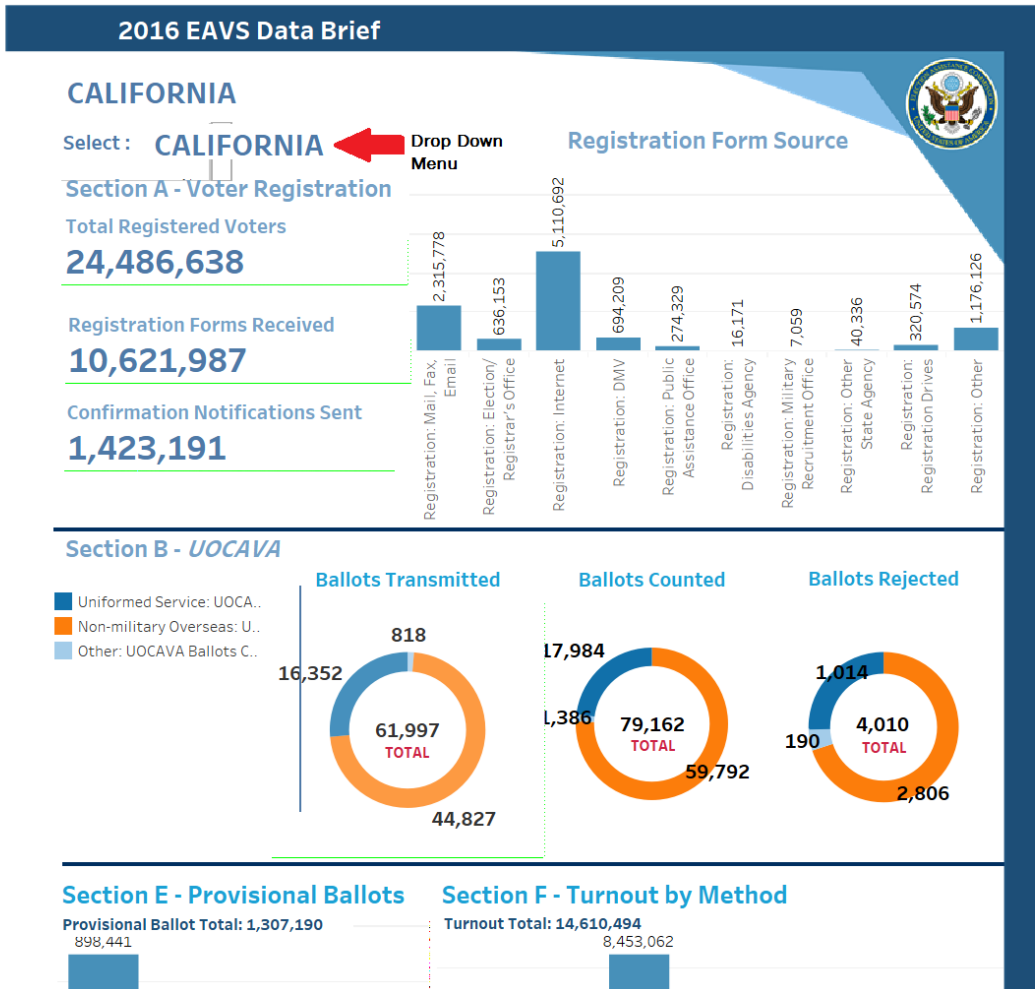
## State Data Brief

These summaries provide EAVS highlights from each state. To select a state, deselect the currently selected state from the drop down menu and then select a new state. Select only one state at a time, and clear your current choice before selecting a new variable. These summaries can also be downloaded as PDFs and printed.

### EAC 2016 Data Visualization Tool

State Level Map	Jurisdiction Totals Map	State Data Brief	Jurisdiction Data Brief	Jurisdiction Comparison	Instructions
-----------------	-------------------------	------------------	-------------------------	-------------------------	--------------

Note: Due to the large volume of data in the interactive, pages may load slowly.







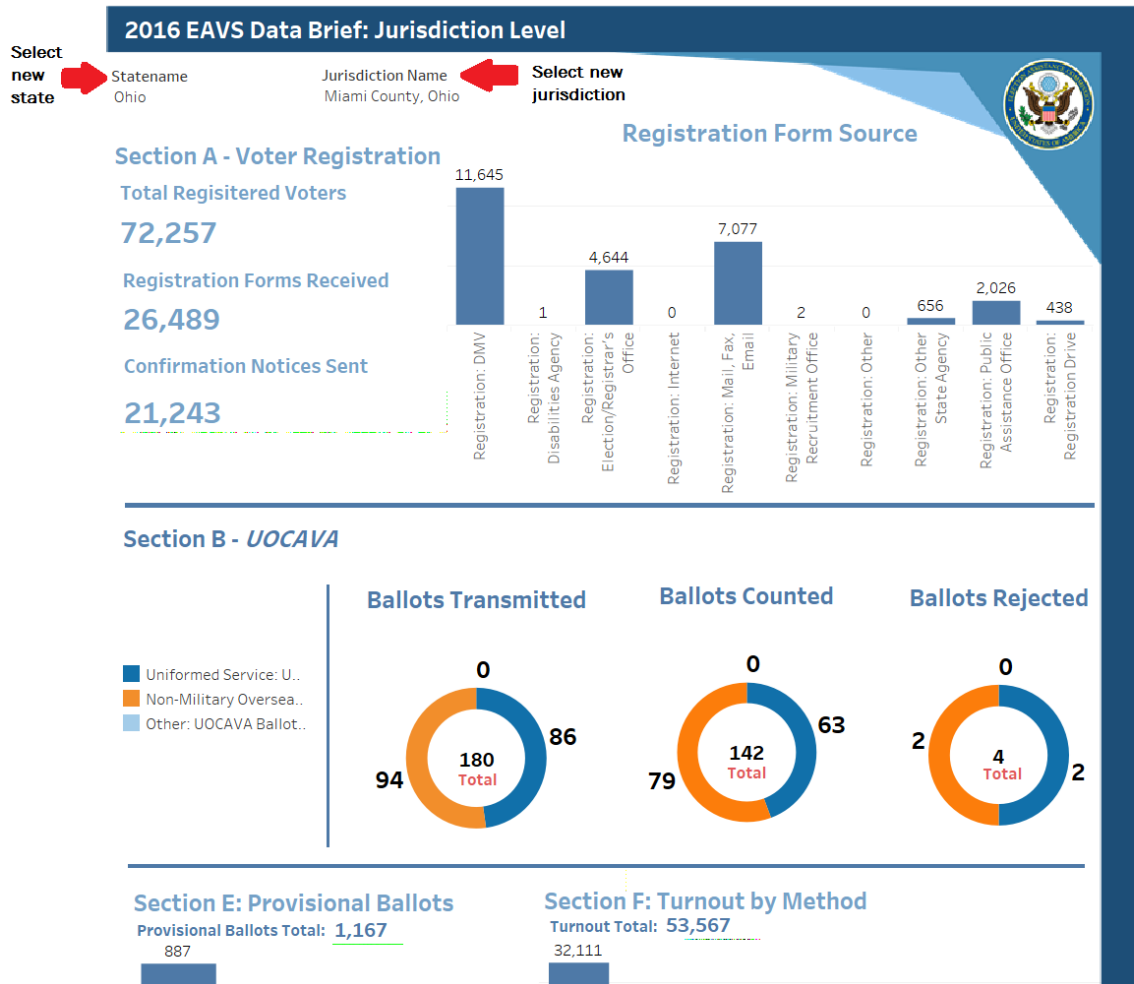
## Jurisdiction Data Brief

These summaries provide EAVS highlights from local jurisdictions. Select only one state and one jurisdiction at a time. To select a jurisdiction, deselect the currently selected jurisdiction and state, then select the state and new jurisdiction you wish to view. In selecting a jurisdiction or state, you may scroll down the list and check a jurisdiction or state or click on the variable box and type in the jurisdiction or state you are looking for.

### EAC 2016 Data Visualization Tool

State Level Map	Jurisdiction Totals Map	State Data Brief	Jurisdiction Data Brief	Jurisdiction Comparison	Instructions
-----------------	-------------------------	------------------	-------------------------	-------------------------	--------------

Note: Due to the large volume of data in the interactive, pages may load slowly.





## Jurisdiction Comparison

To compare EAVS data from one jurisdiction with others, select a baseline jurisdiction by scrolling down the list and checking a jurisdiction or clicking on the variable box and typing in the jurisdiction you are looking for. Then select one or more baseline variables such as the civilian voting age population.

In selecting a baseline variable(s), you may scroll down the list and check a variable or click on the variable box and type in the data point you are looking for. You can then use the same method to select one or more comparison variables and then select what type of jurisdiction you would like to compare. Select the range of registered voter totals you would like to compare by using the slider bar or clicking on each range.

### EAC 2016 Data Visualization Tool

State Level Map	Jurisdiction Totals Map	State Data Brief	Jurisdiction Data Brief	Jurisdiction Comparison	Instructions
-----------------	-------------------------	------------------	-------------------------	-------------------------	--------------

Note: Due to the large volume of data in the interactive, pages may load slowly.

- 1) Clear current selection
- 2) Choose a jurisdiction and variables to compare
- 3) adjust range of Registered Voters slider or type in values to limit jurisdictions on relevant dimension
- 4) Limit to municipalities, counties, or both.

#### Jurisdiction Baseline

Jurisdiction Name	Absentee ballots rejected: ballot miss..
Abbeville County, South Carolina	0

Select new baseline jurisdiction

Baseline Jurisdiction  
Abbeville County, South C..

Select new baseline variable

Baseline Variables  
Absentee ballots rejected:..

#### Jurisdiction Comparison

Jurisdiction Name	New registrations: DMV
Los Angeles County, California	42,855
Cook County, Illinois	0
San Diego County, California	0
Kings County, New York	0
PUERTO RICO	0
Maricopa County, Arizona	209,741
Queens County, New York	0
Harris County, Texas	197,165
New York County, New York	0
Orange County, California	28,257
Bronx County, New York	0
Miami-Dade County, Florida	50,134
King County, Washington	101,407
Wayne County, Michigan	195,068
Dallas County, Texas	128,399
Riverside County, California	0
Broward County, Florida	44,756
Clark County, Nevada	54,151
Philadelphia County, Pennsylvan..	31,597
Tarrant County, Texas	113,973
San Bernardino County, Californ..	0
Bexar County, Texas	104,178
Middlesex County, Massachuset..	44,717
Palm Beach County, Florida	62,012
Alameda County, California	106,372
Suffolk County, New York	0
Oakland County, Michigan	148,108
Sacramento County, California	10,911

Note: Some fields may be blank or zero due to data not being reported or jurisdictions not collecting that data.

Comparison Variables  
New registrations: DMV

Limiting Variables

Select jurisdiction type Jurisdiction Type  
All

Select range of registered voter totals Registered Voters (Total)  
0 to 6,754,224